

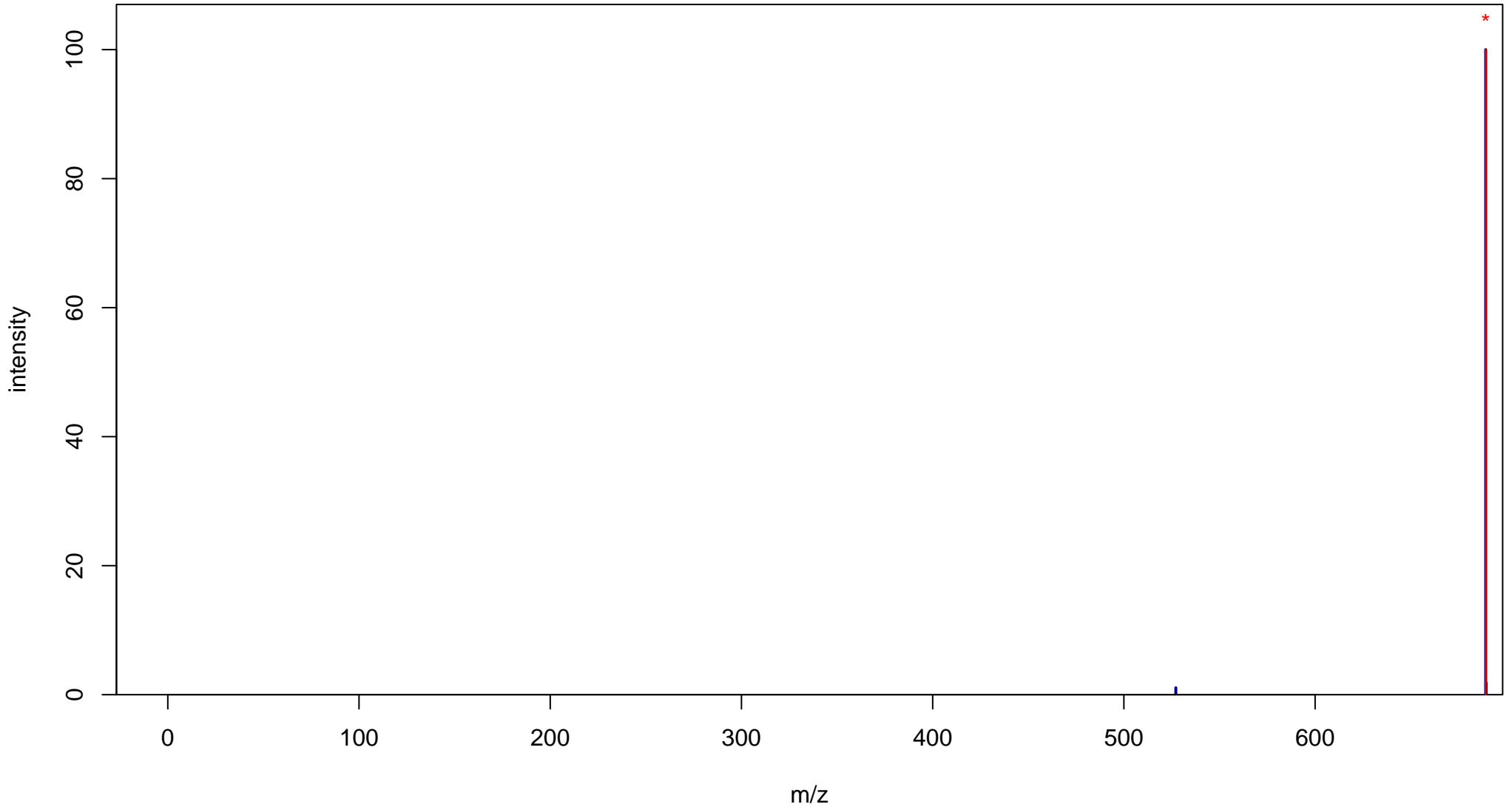
Stachyose

Mass: 666.2219 Formula: C₂₄H₄₂O₂₁

mode: + collisionE: 0V

METLIN ID: 6951 SIGMA Prod: S4001

http://metlin.scripps.edu/metabo_info.php?molid=6951



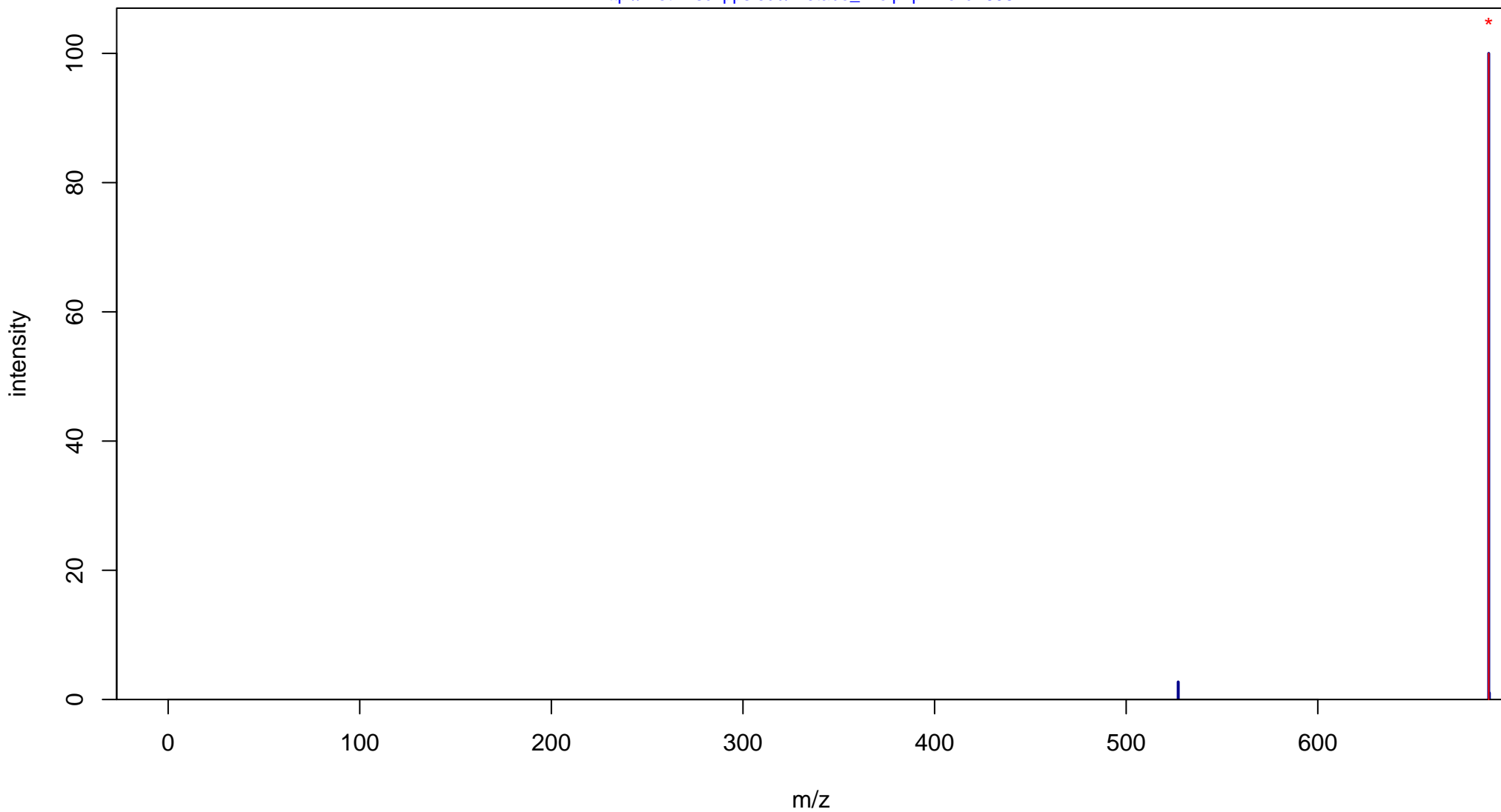
Stachyose

Mass: 666.2219 Formula: C₂₄H₄₂O₂₁

mode: + collisionE: 10V

METLIN ID: 6951 SIGMA Prod: S4001

http://metlin.scripps.edu/metabo_info.php?molid=6951



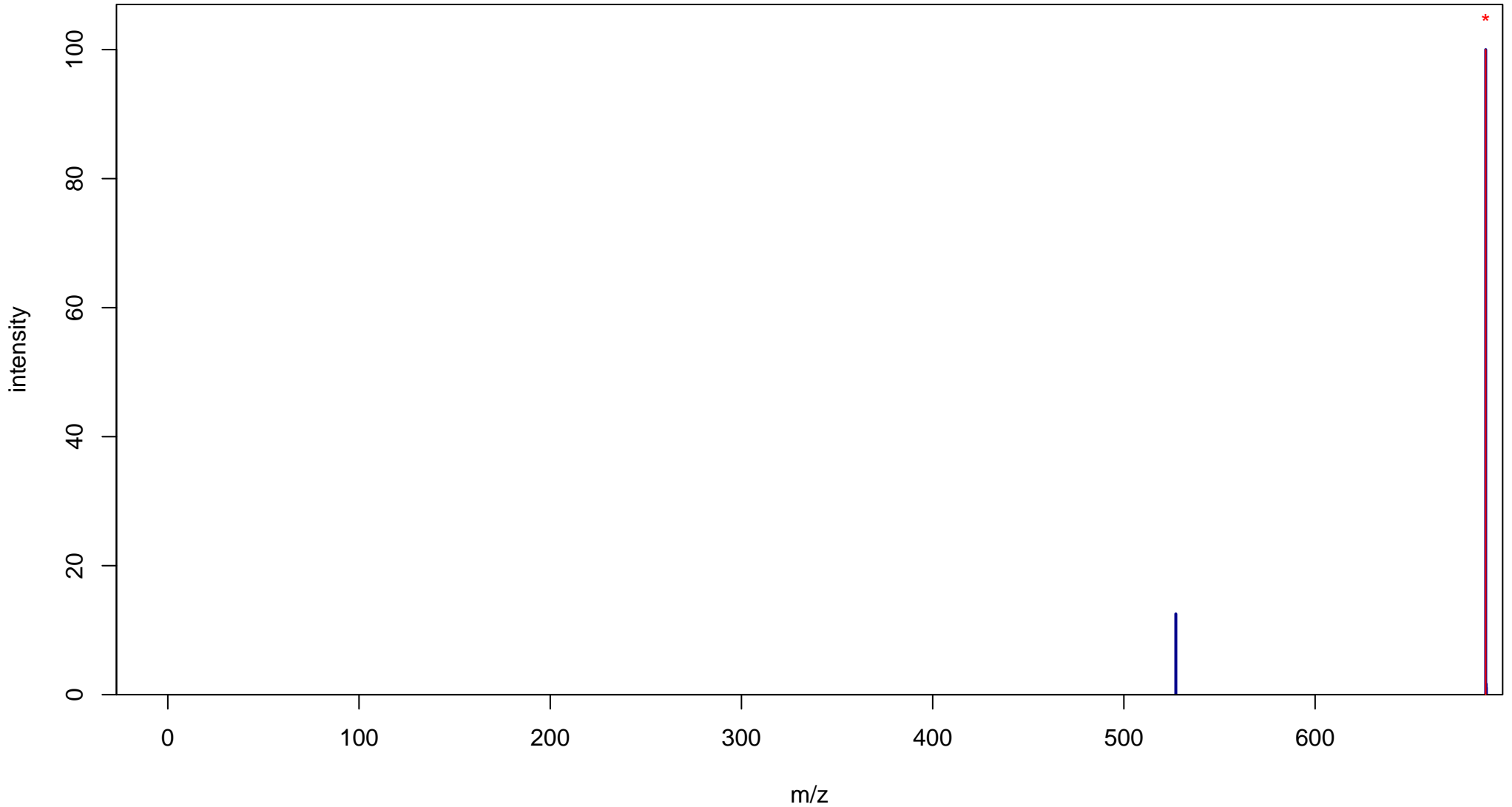
Stachyose

Mass: 666.2219 Formula: C₂₄H₄₂O₂₁

mode: + collisionE: 20V

METLIN ID: 6951 SIGMA Prod: S4001

http://metlin.scripps.edu/metabo_info.php?molid=6951



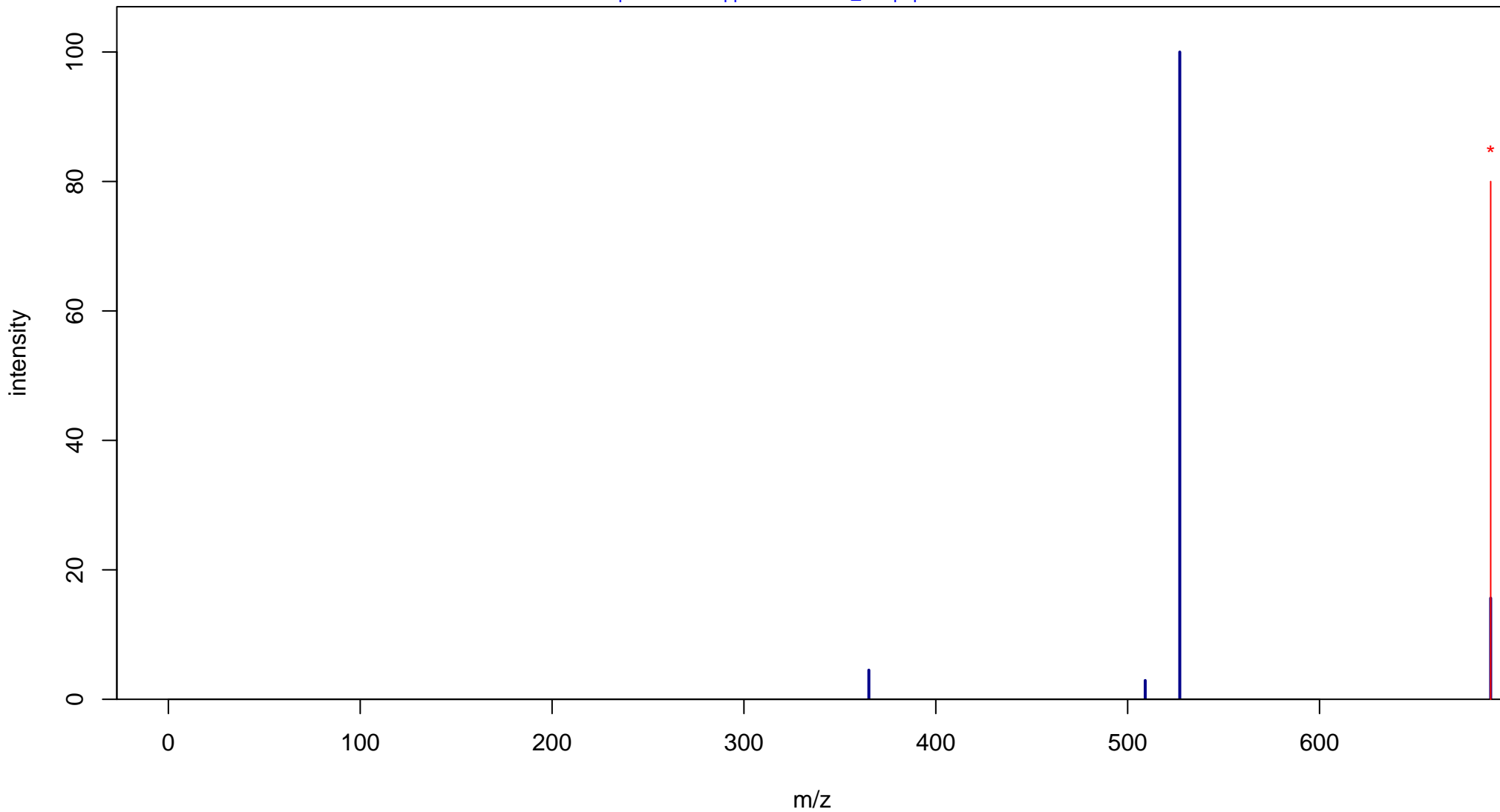
Stachyose

Mass: 666.2219 Formula: C₂₄H₄₂O₂₁

mode: + collisionE: 40V

METLIN ID: 6951 SIGMA Prod: S4001

http://metlin.scripps.edu/metabo_info.php?molid=6951



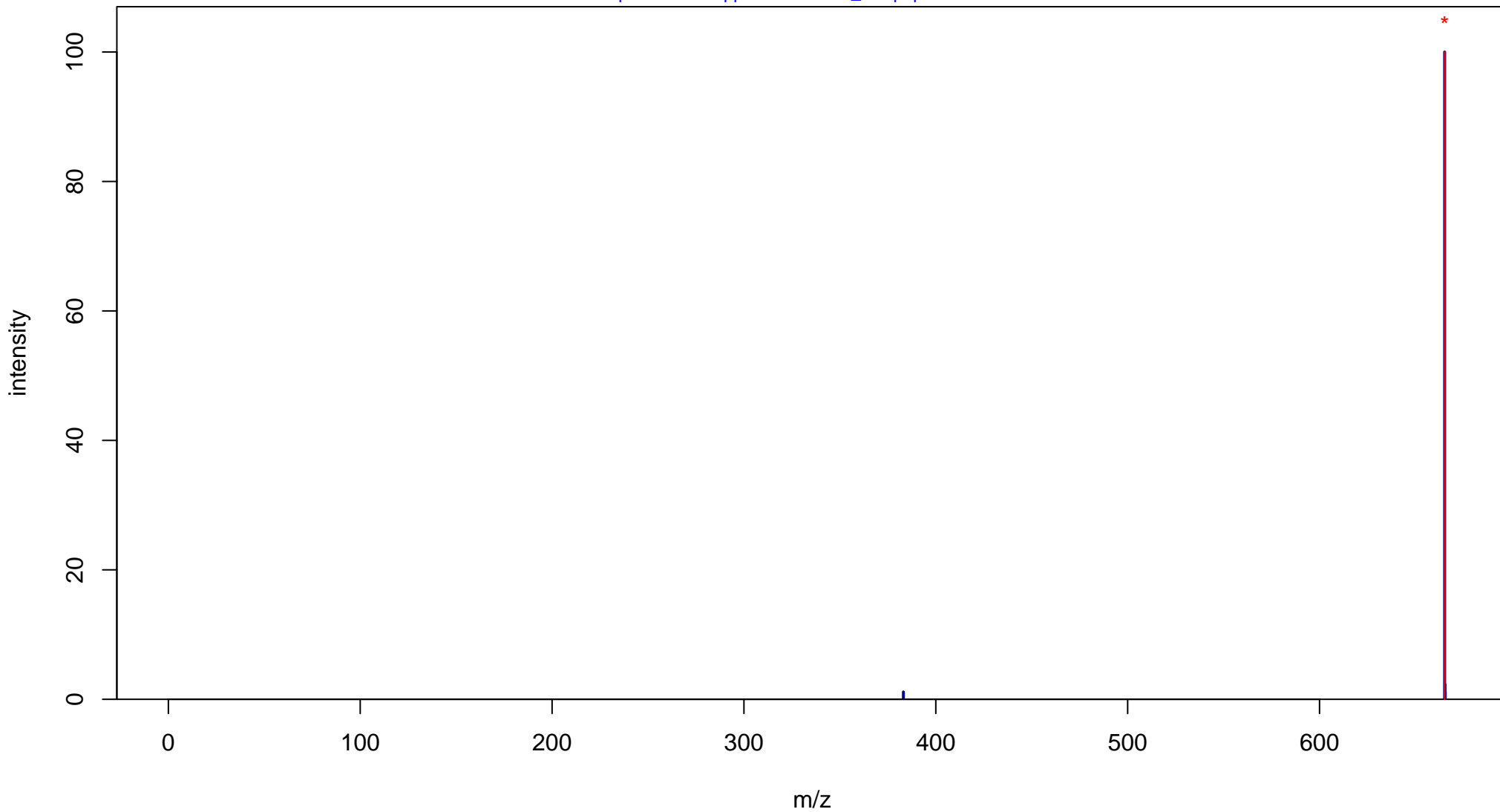
Stachyose

Mass: 666.2219 Formula: C₂₄H₄₂O₂₁

mode: - collisionE: 0V

METLIN ID: 6951 SIGMA Prod: S4001

http://metlin.scripps.edu/metabo_info.php?molid=6951



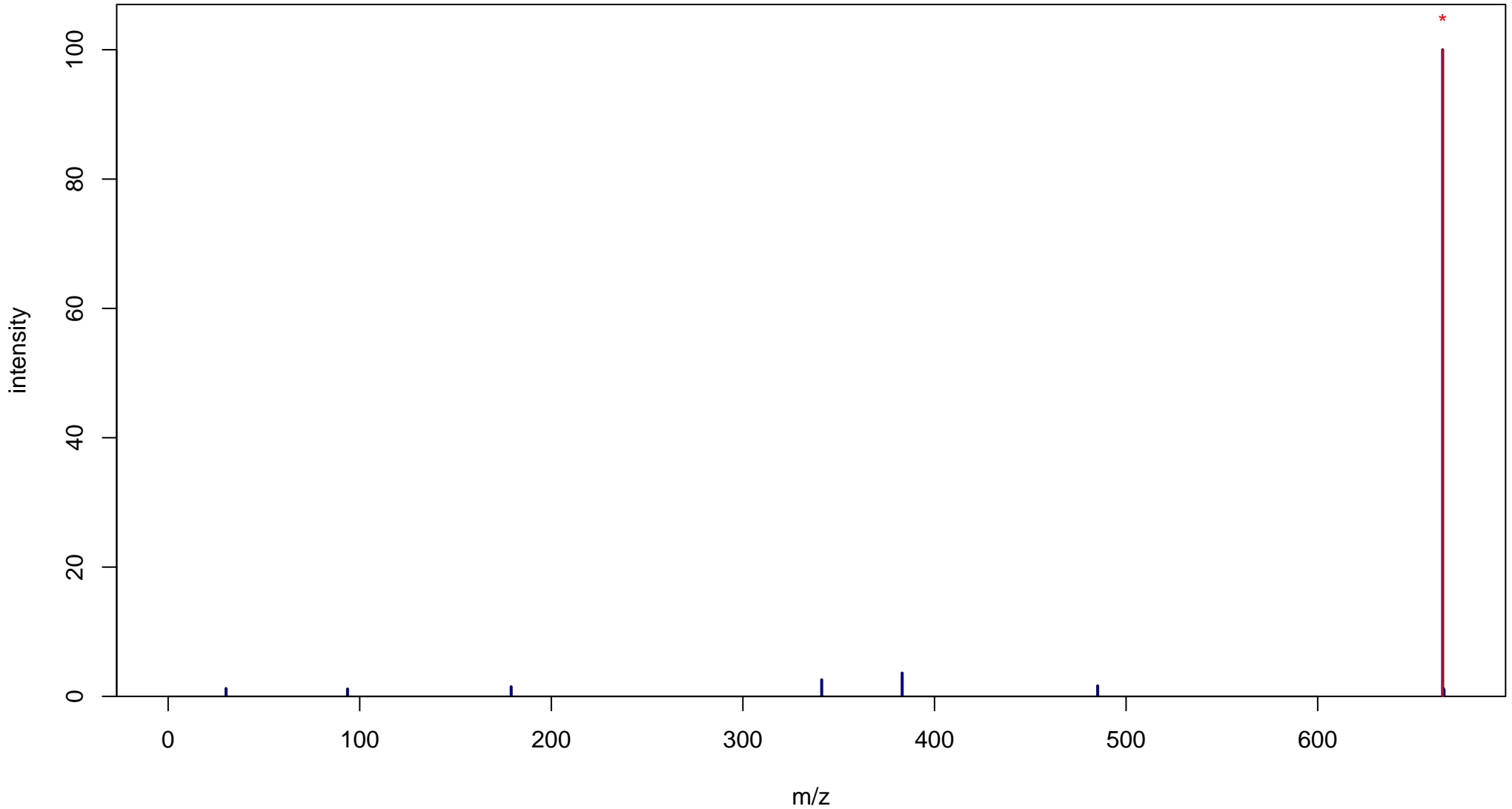
Stachyose

Mass: 666.2219 Formula: C₂₄H₄₂O₂₁

mode: - collisionE: 10V

METLIN ID: 6951 SIGMA Prod: S4001

http://metlin.scripps.edu/metabo_info.php?molid=6951



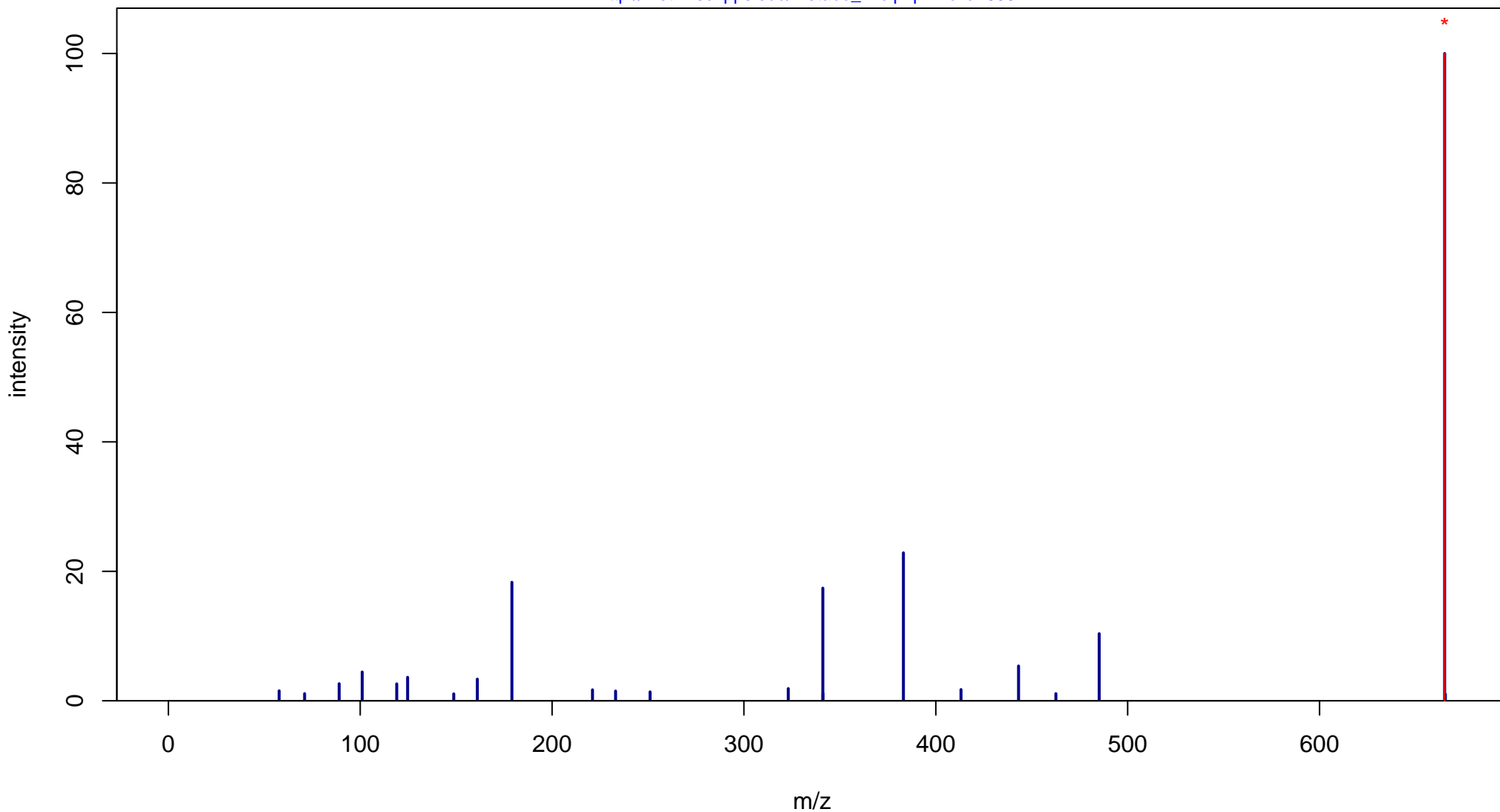
Stachyose

Mass: 666.2219 Formula: C₂₄H₄₂O₂₁

mode: - collisionE: 20V

METLIN ID: 6951 SIGMA Prod: S4001

http://metlin.scripps.edu/metabo_info.php?molid=6951



Stachyose

Mass: 666.2219 Formula: C₂₄H₄₂O₂₁

mode: - collisionE: 40V

METLIN ID: 6951 SIGMA Prod: S4001

http://metlin.scripps.edu/metabo_info.php?molid=6951

