

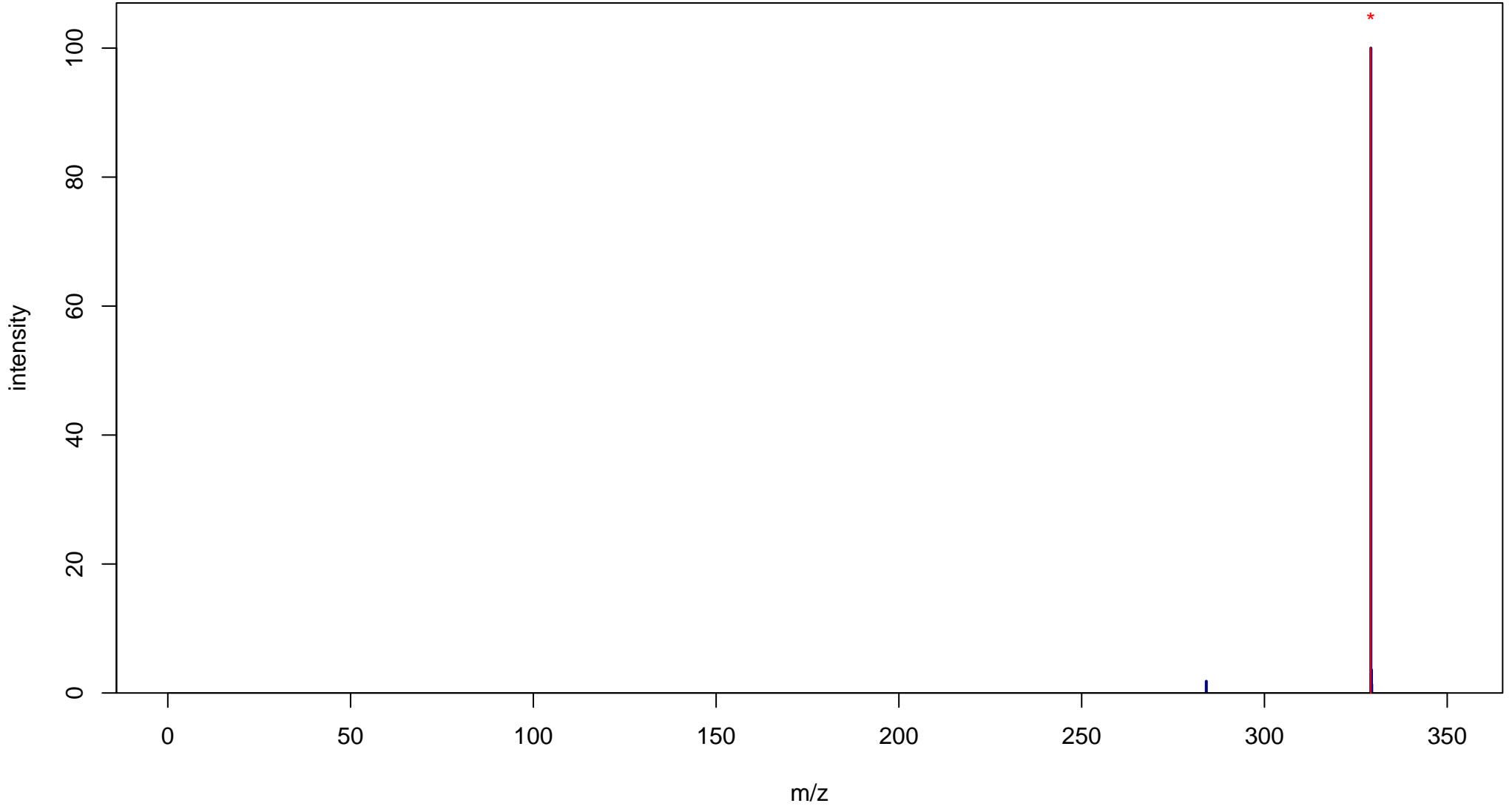
# Nifedipine

Mass: 346.1165 Formula: C<sub>17</sub>H<sub>18</sub>N<sub>2</sub>O<sub>6</sub>

mode: + collisionE: 0V

METLIN ID: 1535 SIGMA Prod: N7634

[http://metlin.scripps.edu/metabo\\_info.php?molid=1535](http://metlin.scripps.edu/metabo_info.php?molid=1535)



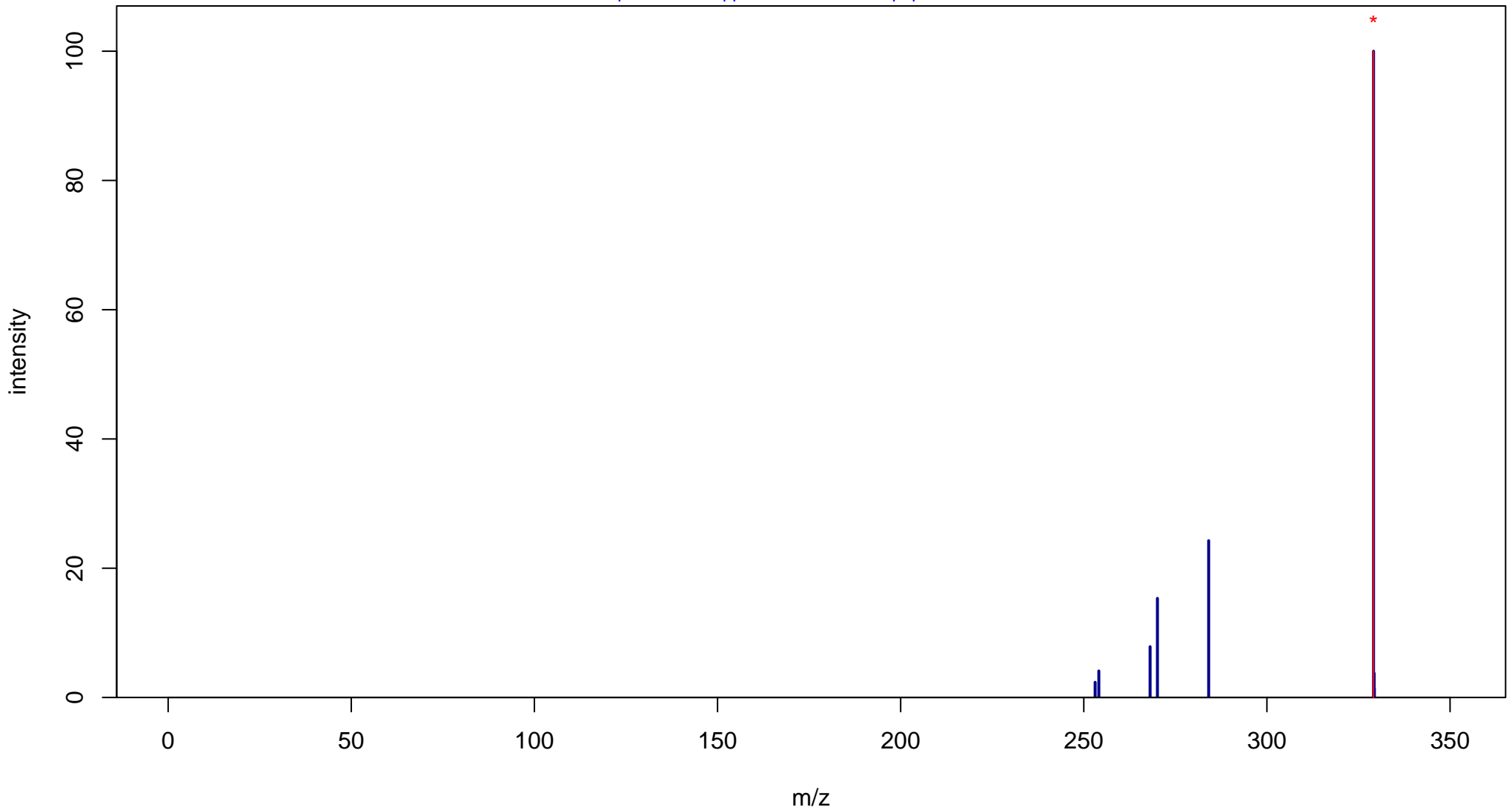
# Nifedipine

Mass: 346.1165 Formula: C<sub>17</sub>H<sub>18</sub>N<sub>2</sub>O<sub>6</sub>

mode: + collisionE: 10V

METLIN ID: 1535 SIGMA Prod: N7634

[http://metlin.scripps.edu/metabo\\_info.php?molid=1535](http://metlin.scripps.edu/metabo_info.php?molid=1535)



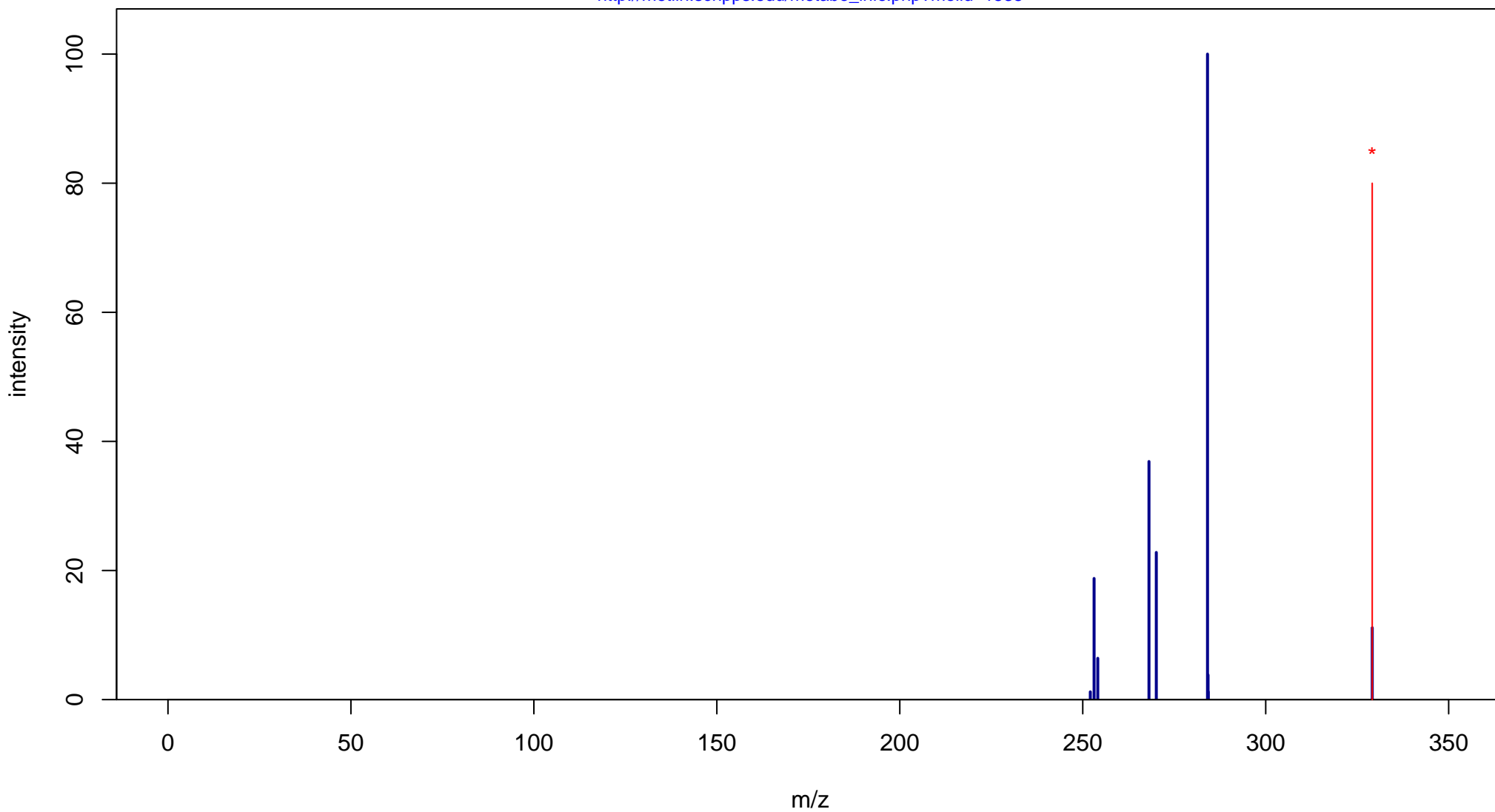
# Nifedipine

Mass: 346.1165 Formula: C<sub>17</sub>H<sub>18</sub>N<sub>2</sub>O<sub>6</sub>

mode: + collisionE: 20V

METLIN ID: 1535 SIGMA Prod: N7634

[http://metlin.scripps.edu/metabo\\_info.php?molid=1535](http://metlin.scripps.edu/metabo_info.php?molid=1535)



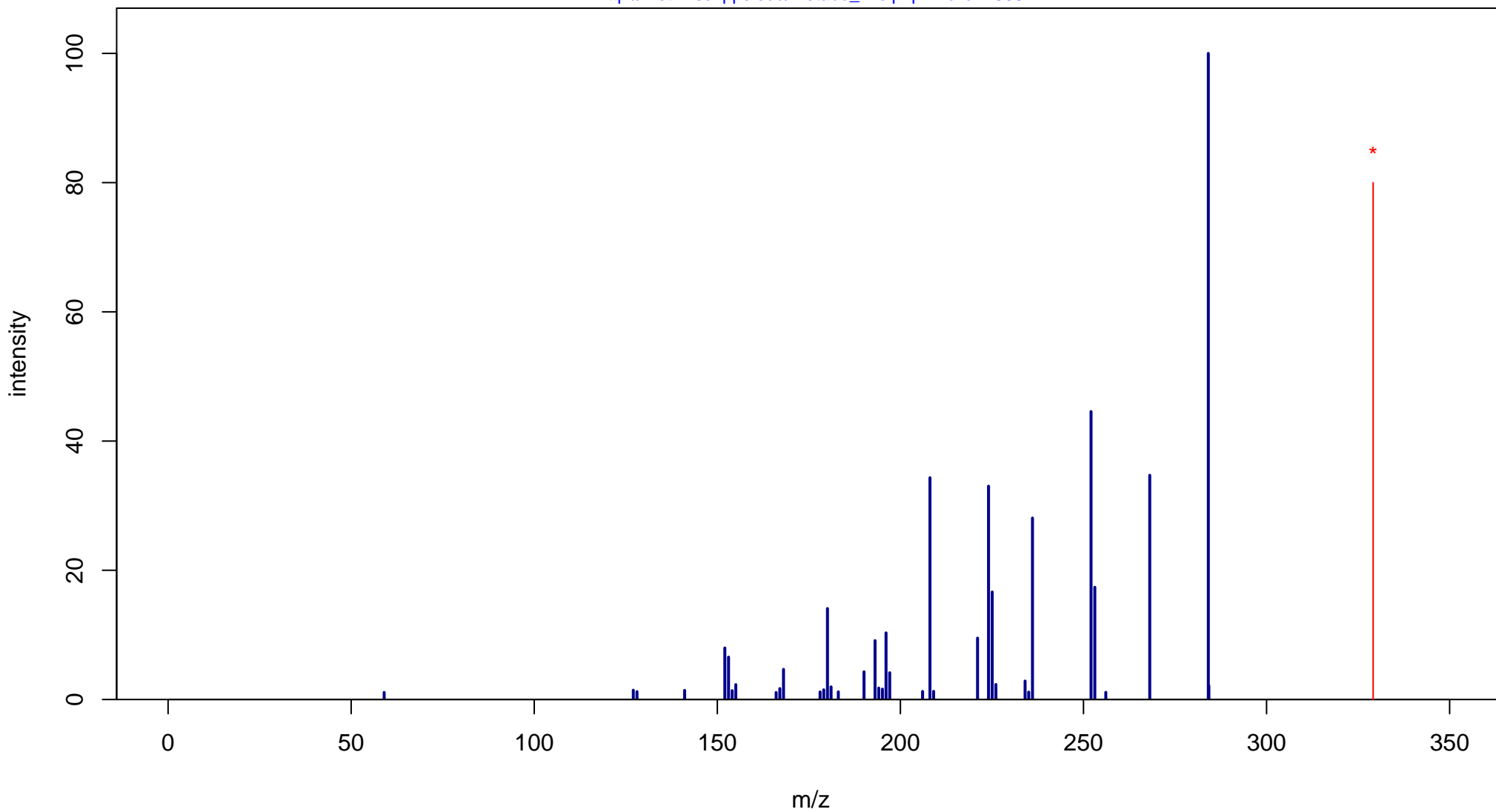
# Nifedipine

Mass: 346.1165 Formula: C<sub>17</sub>H<sub>18</sub>N<sub>2</sub>O<sub>6</sub>

mode: + collisionE: 40V

METLIN ID: 1535 SIGMA Prod: N7634

[http://metlin.scripps.edu/metabo\\_info.php?molid=1535](http://metlin.scripps.edu/metabo_info.php?molid=1535)



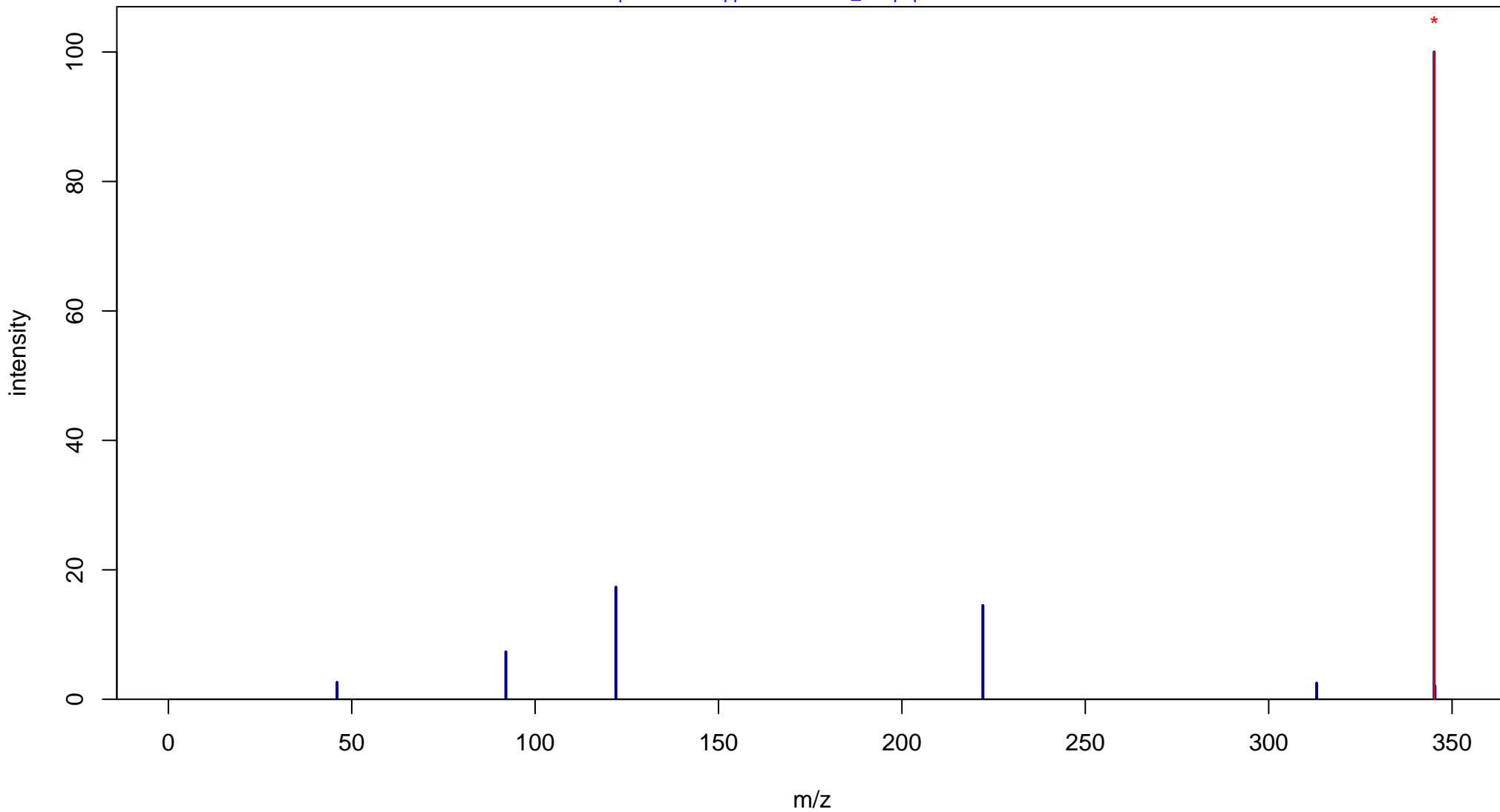
# Nifedipine

Mass: 346.1165 Formula: C<sub>17</sub>H<sub>18</sub>N<sub>2</sub>O<sub>6</sub>

mode: - collisionE: 0V

METLIN ID: 1535 SIGMA Prod: N7634

[http://metlin.scripps.edu/metabo\\_info.php?molid=1535](http://metlin.scripps.edu/metabo_info.php?molid=1535)



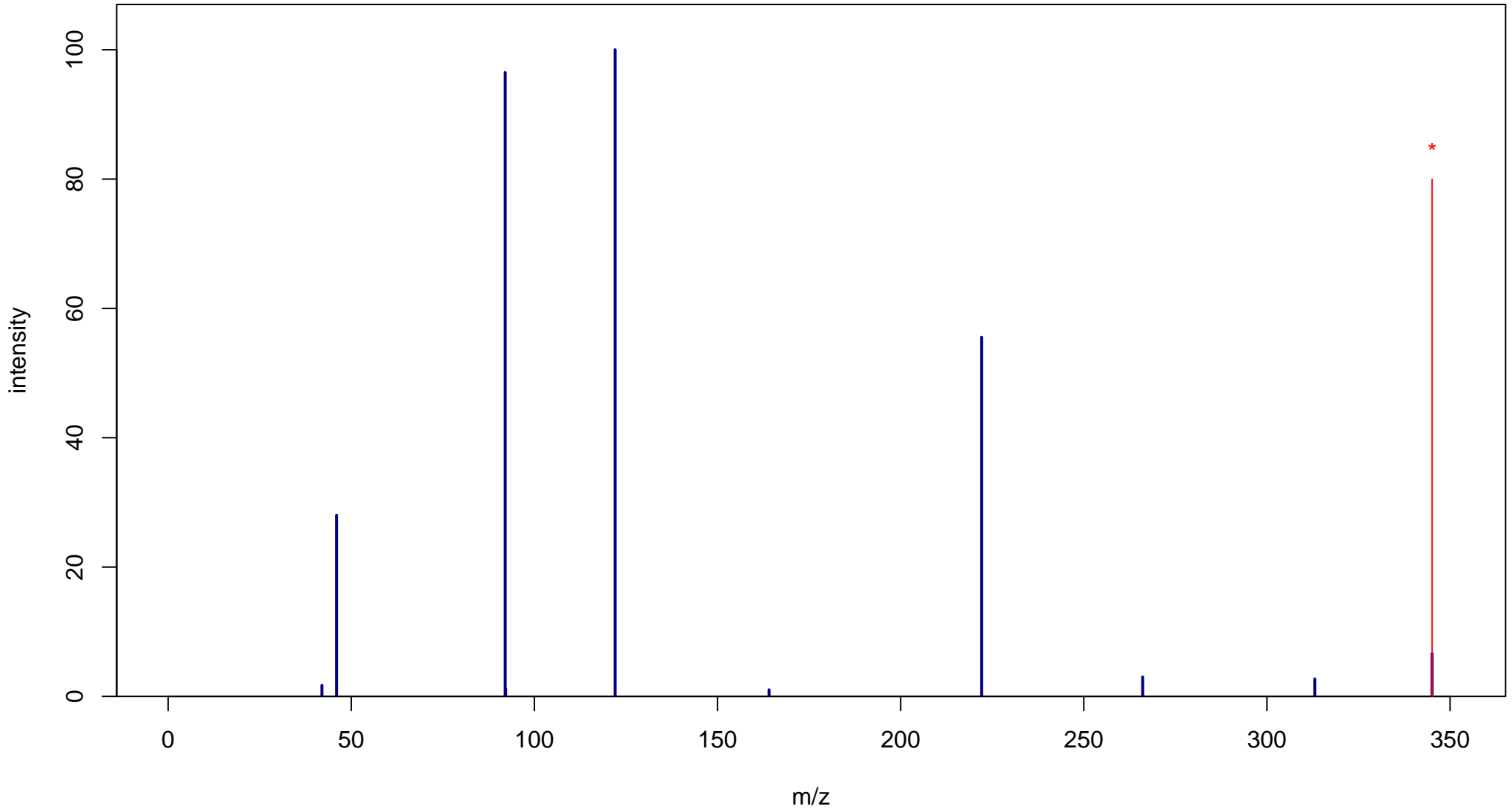
# Nifedipine

Mass: 346.1165 Formula: C<sub>17</sub>H<sub>18</sub>N<sub>2</sub>O<sub>6</sub>

mode: - collisionE: 10V

METLIN ID: 1535 SIGMA Prod: N7634

[http://metlin.scripps.edu/metabo\\_info.php?molid=1535](http://metlin.scripps.edu/metabo_info.php?molid=1535)



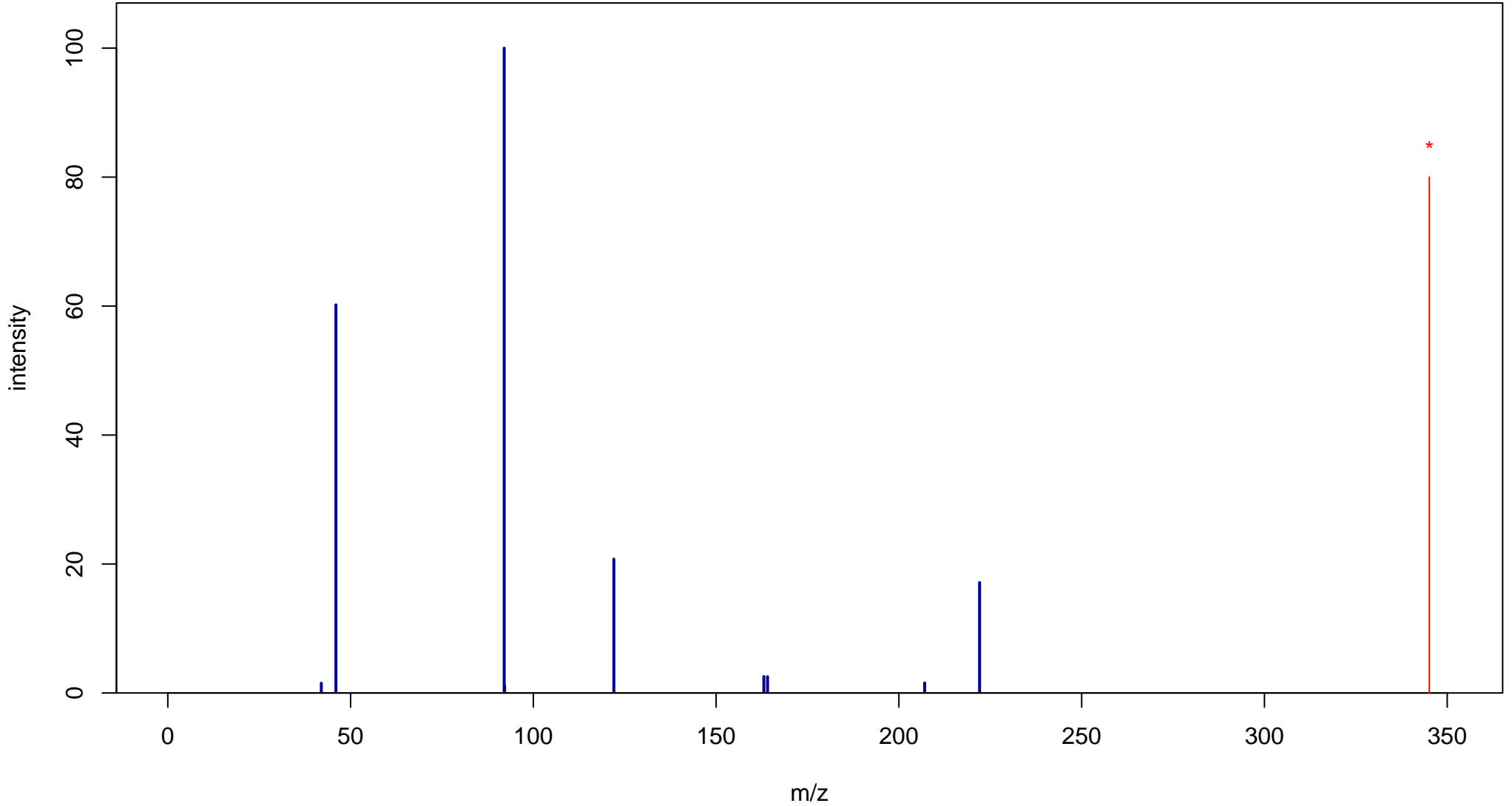
# Nifedipine

Mass: 346.1165 Formula: C<sub>17</sub>H<sub>18</sub>N<sub>2</sub>O<sub>6</sub>

mode: - collisionE: 20V

METLIN ID: 1535 SIGMA Prod: N7634

[http://metlin.scripps.edu/metabo\\_info.php?molid=1535](http://metlin.scripps.edu/metabo_info.php?molid=1535)



# Nifedipine

Mass: 346.1165 Formula: C<sub>17</sub>H<sub>18</sub>N<sub>2</sub>O<sub>6</sub>

mode: - collisionE: 40V

METLIN ID: 1535 SIGMA Prod: N7634

[http://metlin.scripps.edu/metabo\\_info.php?molid=1535](http://metlin.scripps.edu/metabo_info.php?molid=1535)

